



JANUARY 2021

# NAVIGATOR NEWS

Monthly Newsletter of the PEI Community Navigators,  
an initiative of CBDC West Prince Ventures

## IN THIS ISSUE...

Welcome from  
Maxine Rennie  
**PAGE 1**

Western PEI  
Navigator Update  
**PAGE 2-3**

Central PEI  
Navigator Update  
**PAGE 4-5**

Eastern PEI  
Navigator Update  
**PAGE 6-7**

January Calendar  
**PAGE 8**



Individuals and families who choose to settle in rural PEI offer **incredible value to the communities that they settle**. In each of our numerous communities dotting the coastline or the inland rolling hills of our Island, you'll find a diverse group of community members who settled in PEI or were born as Islanders, **coming together to help each other and create a prosperous and fulfilling life in Rural PEI**.



### Message from Maxine Rennie Executive Director CBDC West Prince Ventures

The year 2021 has started strong for our team of regional Community Navigators. In addition to partnerships with a variety of community organizations, we've also launched our online winter series, 'Cooking with Culture'. This initiative takes place every Wednesday evening and provides a culinary & cultural exchange between new and long-time residents of PEI. The results have been delicious!

As we continue to grow, we hope you are feeling our presence in rural communities across the Island. Please engage with the Community Navigator in *your* region - we'd love to hear from you.

~Maxine Rennie

# Community Spotlight: Bienvenue Évangéline



Meet Karine Gallant et Manu Nicaise of Bienvenue Évangéline with la CIF (La Coopérative d'intégration francophone de l'Île-du-Prince-Édouard). CIF is our sister organization working with newcomers to our PEI communities.

Recently we travelled to beautiful Wellington PEI and met with Karine and Manu for a discussion on project updates, how to tackle gaps, looking at synergies, and areas for collaborative approaches to supporting & welcoming all new residents to the region. Karine and Manu do a fantastic job at welcoming all to their local communities, as they support newcomers to the region. Their project goal is to prepare the community to welcome others as they increase capacity and continue to grow, building better more inclusive communities for all.

They always have lots of great activities on the go. Coming up soon on Saturday, January 30th from 9 AM to 1:30 PM is a community dialogue which will focus on both local internet services and housing challenges.

For more information or to register, feel free to reach out directly by email anytime at: Karine Gallant <Karine@cifipe.ca> or Manu Nicaise <Manu@cifipe.ca>.

Merci, thank you! We look forward to continued partnership!



Telephone: 902-853-3636

Email: [Scott.Smith@cbdc.ca](mailto:Scott.Smith@cbdc.ca)

Facebook Group - search for:  
Western PEI Community Navigator

Office: 455 Main Street  
Alberton, PEI

Here at the Western PEI  
Community Navigator  
Office we are busy  
planning winter activities.  
We'll be partnering with  
the Western Region Sport  
and Recreation Council for  
'Learn To Skate'



as well as sharing about  
opportunities to Snowshoe!



Stay tuned for more  
details!

# Cultural Spotlight: Thailand

Sawadee Krap (masculine)! Sawadee Ka (feminine)!  
(Hello in Thailand!)

## Meet Nuii Thitirat

Nuii was born & raised in Sukhothai province in Thailand, and as we flipped through a picture book of photos on her home province, the beauty of the place leapt off the pages and really brought it to life! Nuii arrived to PEI in January 2019 and now calls Montrose, PEI home. Her background includes many certifications in Thai massage therapy and it is her dream to own a Salon, Spa, and Massage business, one we would love to see come true in the Western region.



## Fast facts on Thailand:

- The country consists of 77 provinces
- Thai language includes 44 characters
- It is a country filled with many temples and people frequently offer prayers to Buddha
- Prayer, temples (often w/ gold), family, water, & monks who offer blessings are well respected
- It is often referred to as "The Land of a Thousand Smiles"
- 'Loy Krathong' is a spiritual water festival held each November
- 'Songkran' is the Khmer New Year's national holiday. Held on the 13 April every year, the holiday period extends from 12 to 16 April (and there are many water fights)!
- The national animal is the elephant (and they can even play soccer)!
- Staple foods include rice, noodles, chicken, pork and fish



Nuii has been living in Western PEI for 2 years now and she was quick to share how much she loves the beauty of PEI, along with the rich and bountiful seafood industry that the island offers. Coming to Canada gave her the opportunity to see snow for the first time and she loved it, along with the friendly people here who she mentioned are always smiling as well.

Nuii graciously shared several photos about Thai culture and offered many details beyond our printing capabilities with our newsletter. Be sure to check out the Western PEI Community Navigator Facebook Group for more photos, listing what each photo represents!

Khob Khun Khap (masculine). Khob Khun Ka (feminine).  
(Thank you!)



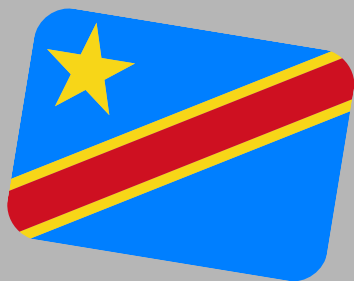
# Cooking with Culture



Recently the Central PEI Community Navigator kicked off the first night of the PEI Community Navigators **'Cooking with Culture' online winter series!**

Here's a behind-the-scenes view from the kitchen and our first presenter **Nicole, who took the audience on a Congolese cultural & culinary journey** - thank you Nicole! And thanks to participant Greg for sharing the photo below.

**Western, Eastern and Central PEI Community Navigators will be taking turns hosting classes every Wednesday evening until March 31.** Need more information about participating? Email [Info.CommunityNavigator@CBDC.ca](mailto:Info.CommunityNavigator@CBDC.ca) .



Telephone: 902-598-7560

[Peggy.Miles@cbdc.ca](mailto:Peggy.Miles@cbdc.ca)

Facebook Group - search for:  
Central PEI Community Navigator

Office: Kensington Town Hall  
(upstairs)

55 Victoria Street East

## Virtual Community Tours

Did you know the Central PEI Community Navigator initiative has a sub-committee working to develop **'virtual community tours' for new residents?** This involves capturing video within Central PEI communities of the important community assets that new residents need to know about.

**Watch for us and our video camera** at your local municipal office, corner store, recreational facility & more! From there, you'll see these short videos airing on social media & participating municipal websites.



**Lindsay Murray  
shares how the  
PEI Community  
Navigator Program  
helped her settle  
into her new home  
and job in  
Prince Edward Island**



*"With a new job and a new home, it was extremely helpful having the extra support from Peggy Miles, Community Navigator.*

*She is incredibly connected in the Central Coastal region and was able to direct me to both helpful resources and contacts.*

*Without her help, I would be less informed and less successful at my current position. I am grateful for her time and energy; and most importantly, her kindness in the delivery of her assistance.*

*It is really nice to feel welcomed this way when you're trying to create a new home."*

**Lindsay Murray, Executive Director  
Central Coastal Tourism Partnership**

Are you a new or longtime resident of Central PEI who operates a tourism business? Contact Lindsay to see how she and the Central Coastal Tourism Partnership (CCTP) can support you.

[lindsay@centralcoastalpei.com](mailto:lindsay@centralcoastalpei.com)

| P: 902-963-3613 | C: 902-394-3171



**Are you involved in a  
Central PEI  
Municipality?**



The Central PEI Community Navigator is available to meet with you; partner for activities; or present to your Council.

The PEI Community Navigators can work with your town or rural municipality to develop a welcoming plan that will **promote your community as a welcoming place to live and foster economic, social and cultural growth.**

Reach out to Peggy,  
Central PEI Community  
Navigator, to discuss  
potential collaborations  
with your municipality at  
902-598-7560 or  
[Peggy.Miles@cbdc.ca](mailto:Peggy.Miles@cbdc.ca)

## Meet Mary Sunday Oni

Mary believes that if you want something, you should have faith that it can happen. **Canada first started calling her name when she was just 14 years old**, and it stuck with her throughout the years until she finally arrived. The Nigerian native first visited Canada on her honeymoon in 2016, when she visited a family friend in Toronto with her husband.

In 2019, she returned to Canada with their small daughter, arriving in PEI after finding work locally and transitioning from a visiting visa to a work visa. Mary recently received her Permanent Resident status and **looks forward to the day when her husband can join her so that they can start their life as a family in this wonderful and safe place.**

**When she looks at this country, she sees endless opportunities for her young daughter, Kimberly.**

## What brought you to PEI?

**"I heard stories of islands**, and when I checked the map, the smallest province in Canada is an island! I thought, why not try it out?"

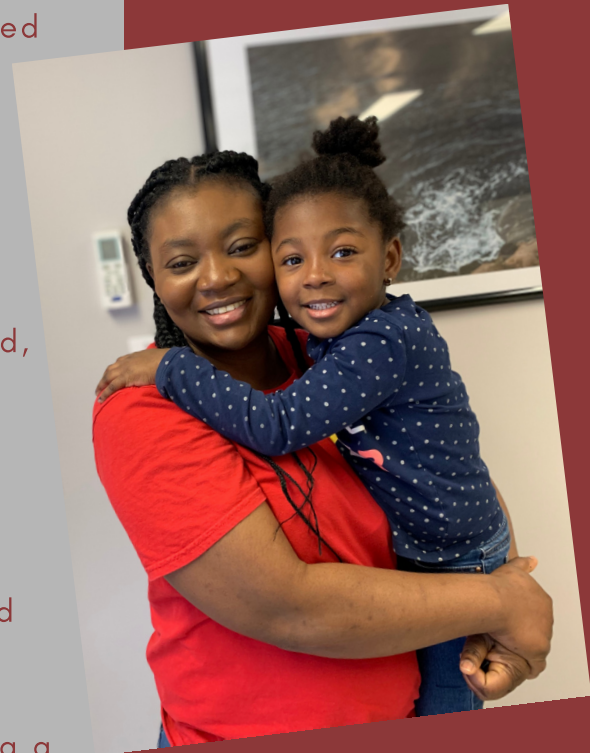
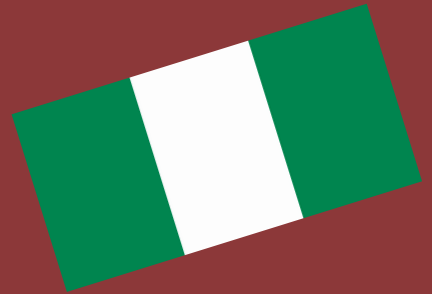
A family friend, in Toronto said, "You'll be surrounded by water. Its very cold! FREEZING! **Minus twenty, minus THIRTY! "**

"In Toronto, it's always buzzing and people moving around, so I thought, 'is there really this quiet place in Canada?'

When I arrived, it was meant to storm the following day, and I just watched the window the whole day. It was so peaceful, and there was no traffic! **As time went on, I thought "This is a great place to raise a family.** I also noticed that there were a lot of people here to retire and very little violence."

For Mary, integrating into a community means first finding a church to call your own.

"In Charlottetown when I arrived, I volunteered at the church, it was the same one I went to back at home. I told him I was new here and started volunteering with programs and Sunday Schools."





Meet Mary Sunday Oni, Continued...

**So, how has the reception been?**

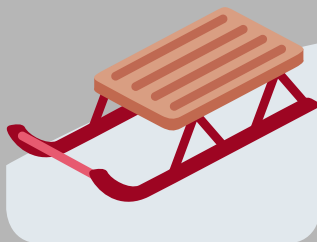
"The people here are so hospitable; they go out of their way to help you. Especially this church, the Church of Christ in Montague. They have been so helpful. I needed to live locally for work, because I was living in Charlottetown, and a wonderful lady let me stay in her cottage at first. They connected me to people and I was able to find an apartment in Montague."

**As one of the first in her family to attend and graduate from university, and the only one to immigrate to Canada, she is notably ambitious and self assured.**

**What do you look forward to long term, as a resident of PEI?**

"I look forward to creating a life here, to get a good job. I want my daughter to learn French and have a good education. I want to contribute to the economy and to be a leader in my community, to know people and to have people feel like they can come to me if they're new to the community as well."

When prompted about what she likes about PEI, four year old Kimberly replied "School!".



Come join us in February for  
**Family Day Sledding**

in Partnership with the Town of Souris  
email [lindee.gallante@CBDC.ca](mailto:lindee.gallante@CBDC.ca) for more info!

Be on the lookout on our Facebook Group for  
more Eastern PEI Winter Activities!



Mary Oni, a proud new resident of Eastern PEI



Telephone: 902-969-5989

[Lindee.Gallante@cbdc.ca](mailto:Lindee.Gallante@cbdc.ca)

Facebook Group - search for:  
Eastern PEI Community Navigator  
Office: 544 Main Street, Montague  
15 Green Street, Souris  
(one day per week)



## Prince Edward Island Virtual Adviser Program

Does your business need help solving  
a problem due to COVID-19?

This **FREE** support program will  
give you access to knowledgeable  
professionals for **FREE** business  
advice during COVID-19.



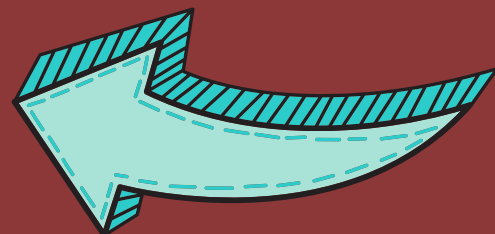
This **FREE** program sponsored by CBDC Western PEI, is open to  
all business and non-profit organizations operating in PEI.

**Apply now - spaces are limited!**  
[www.boomersplus.com/PEI-VAP](http://www.boomersplus.com/PEI-VAP)

For further information contact:  
Carol Rayner (Project Coordinator) at CBDC Western PEI.

902-853-3636 or [Carol.Rayner@cbdc.ca](mailto:Carol.Rayner@cbdc.ca)

# Opportunity for business owners!



## JANUARY CALENDAR

### **January 7 | Orthodox Christmas**

*Many Orthodox Christians annually celebrate Christmas Day on or near January 7 to remember Jesus Christ's birth, described in the Christian Bible. This date works to the Julian calendar that pre-dates the Gregorian calendar, which is commonly observed.*

### **January 14 | Orthodox New Year**

*The Orthodox New Year, also known as the Old New Year, according to the Julian calendar is on January 14 in the Gregorian calendar. Orthodox New Year celebrations include social gathering featuring traditional activities and dishes from other parts of the world such as Russia or Ukraine.*

### **January 25 | Robbie Burns Day**

*Burns Night is annually celebrated in Scotland on or around January 25. It commemorates the life of the bard (poet) Robert Burns, who was born on January 25, 1759. The day also celebrates Burns' contribution to Scottish culture. His best known work is Auld Lang Syne.*



CBDC Western PEI, West Prince Ventures Limited  
Street Address | 455 Main Street | Alberton, PEI  
Postal Address | PO Box 368 | Alberton, PEI | COB 1B0  
Telephone | (902) 853-3636



Website | [www.cbdc.ca/en/resources/contact-cbdc-west-prince-ventures](http://www.cbdc.ca/en/resources/contact-cbdc-west-prince-ventures)  
Like the PEI Community Navigators Facebook Page at  
[www.facebook.com/PEICommunityNavigators](https://www.facebook.com/PEICommunityNavigators)